

# Regents Online Campus Collaborative

## Nashville State

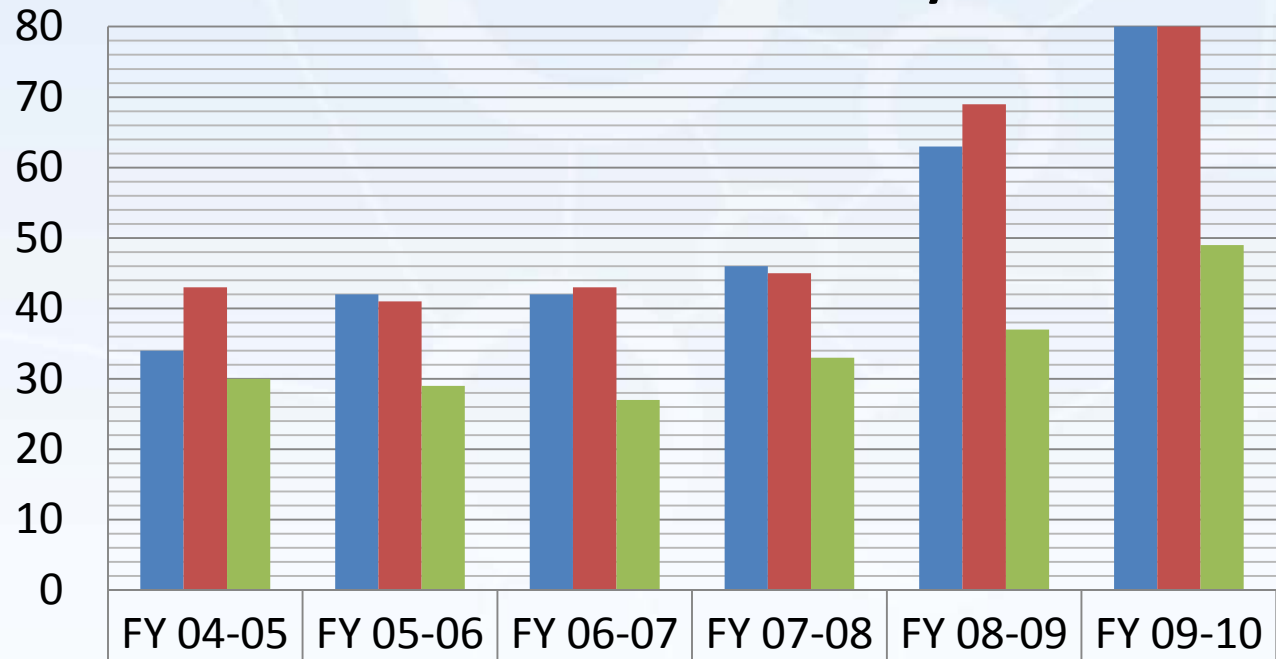
Presented by:  
Raylean Henry  
Associate Vice Chancellor  
February 16, 2011



## **RODP Programs Offered by Nashville State**

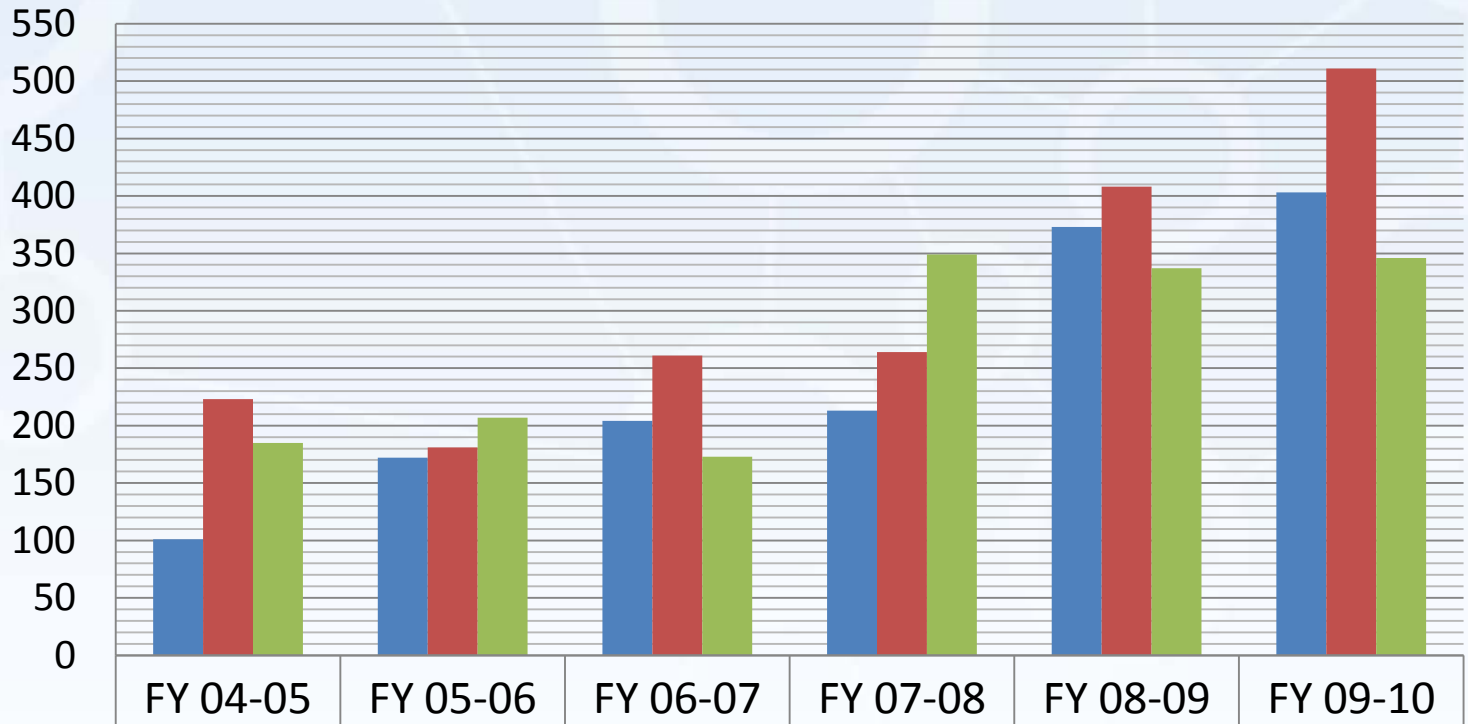
- Associate of Applied Science in Professional Studies with a concentration in Information Technology
- Associate of Applied Science in Early Childhood Education
- Associate of Applied Science in Web Technology
- Associate of Arts in General Studies (University Parallel)
- Associate of Science in General Studies (University Parallel)
- Associate of Science in General Studies (University Parallel) for Teacher Aides and Paraprofessionals

## Courses Offered by Nashville State



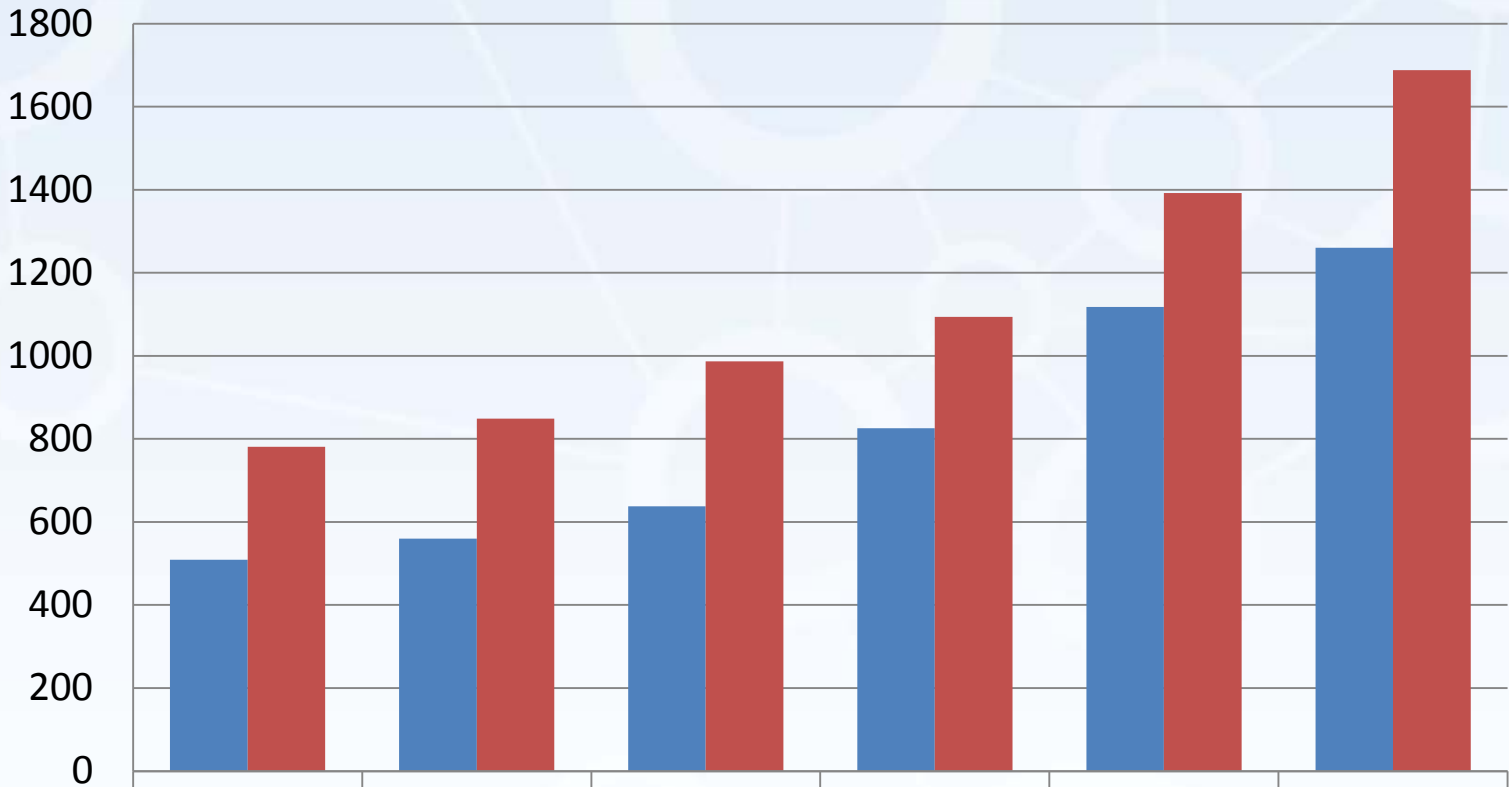
	FY 04-05	FY 05-06	FY 06-07	FY 07-08	FY 08-09	FY 09-10
Fall	34	42	42	46	63	80
Spring	43	41	43	45	69	82
Summer	30	29	27	33	37	49

## RODP Student Counts for Nashville State



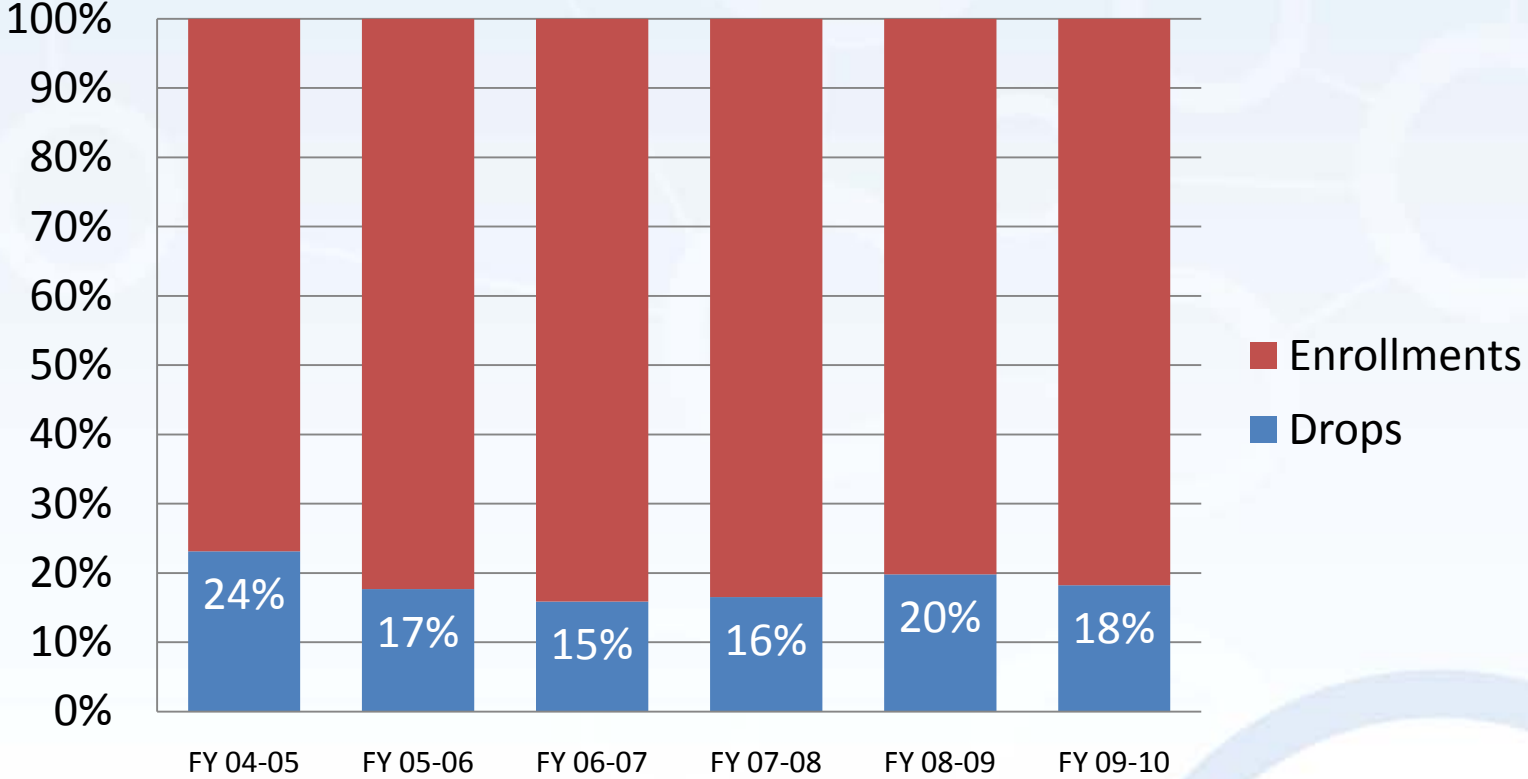
<span style="color: blue;">■</span> Fall	101	172	204	213	373	403
<span style="color: red;">■</span> Spring	223	181	261	264	408	511
<span style="color: green;">■</span> Summer	185	207	173	349	337	346

## RODP Student Count/Enrollments for Nashville State



	FY 04-05	FY 05-06	FY 06-07	FY 07-08	FY 08-09	FY 09-10
■ Headcount	509	560	638	826	1118	1260
■ Enrollments	781	849	987	1094	1392	1688

# RODP Student Drop History for Nashville State

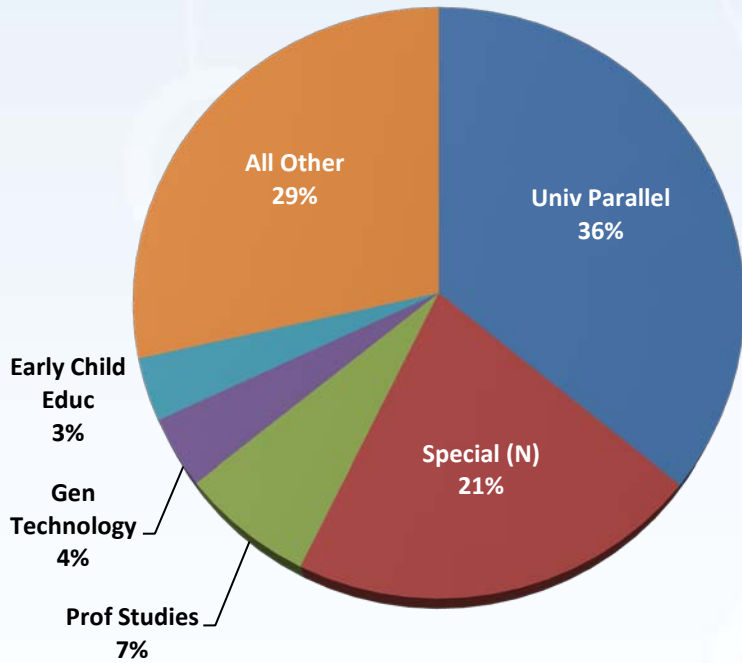


## Full-time Student Equivalents for Nashville State

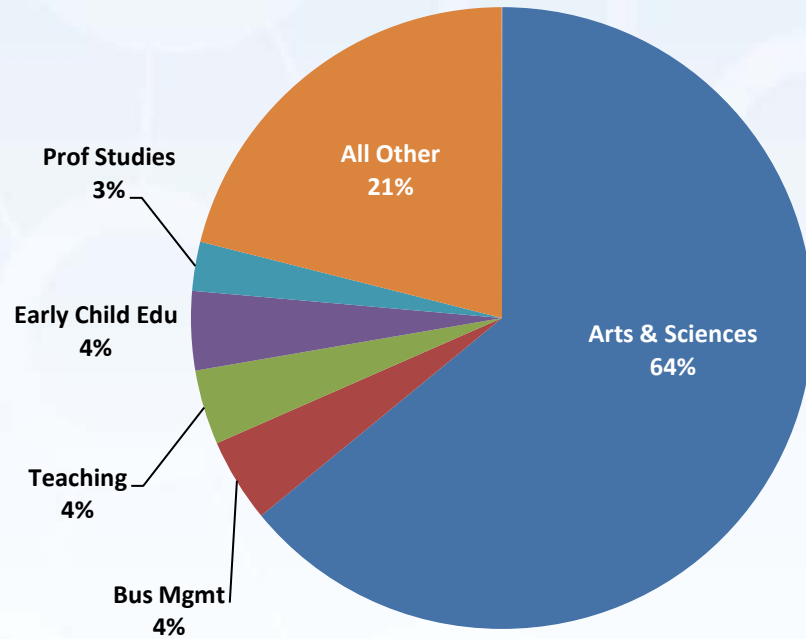


	FY 04-05	FY 05-06	FY 06-07	FY 07-08	FY 08-09	FY 09-10
■ Fall	42.9	58.5	69.1	65.9	96.6	119.9
■ Spring	66.7	57	82.6	83.5	117.3	156.3
■ Summer	55.7	57.3	51.5	87	87.2	95.2

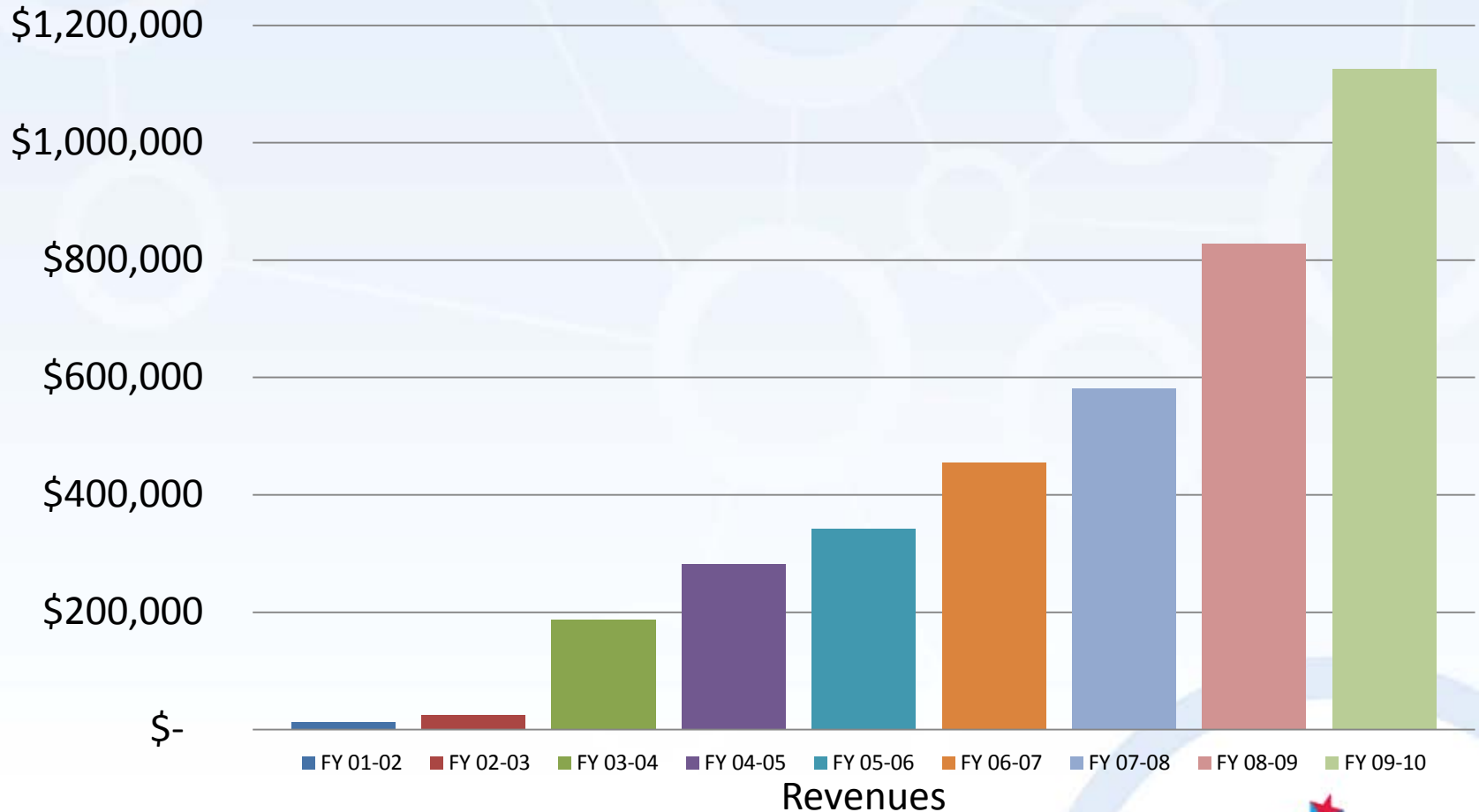
**FY 04-05 RODP Enrollments by Major at Nashville State**



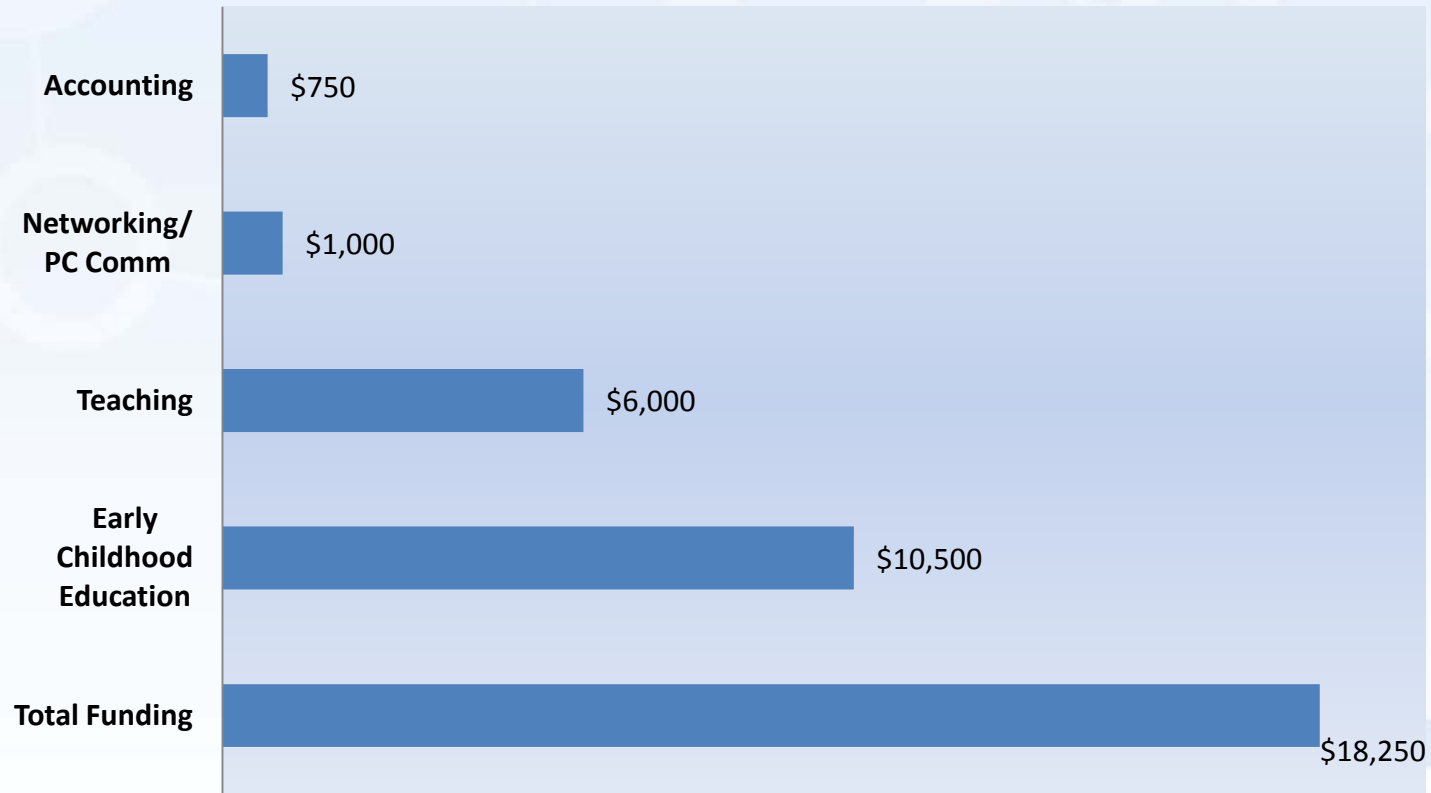
**FY 09-10 RODP Enrollments by Major at Nashville State**



## Annual Revenues Net of Instructional Cost for Nashville State



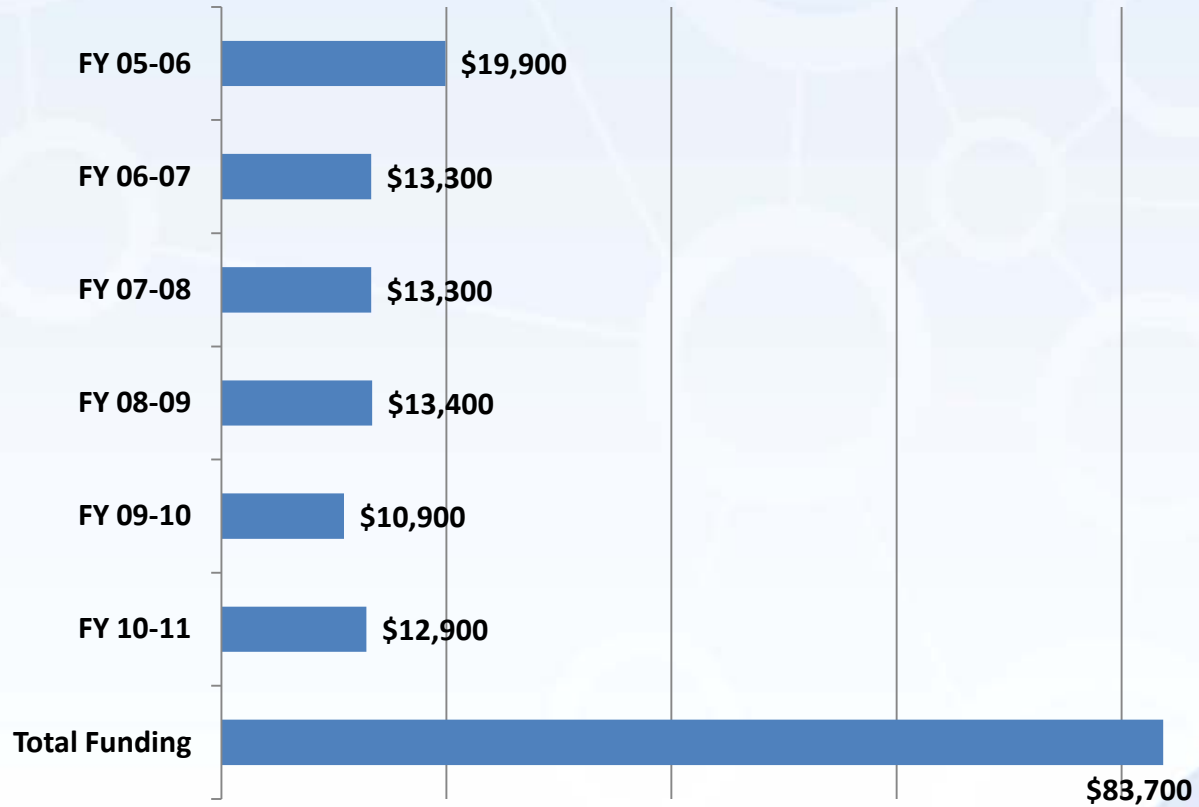
## RODP Course Development Funding Received by Nashville State 2005-2010



## Nashville State Course Developers – FY 09-10

<b>Jeanne Altstatt</b>	<b>Kevin Harris</b>	<b>Peggy Sharpe</b>
<b>Shannon Canfield</b>	<b>Ron Hayes</b>	<b>David Weilmuenster</b>
<b>Howard Doty</b>	<b>Michael Kiggins</b>	<b>Sandra Williamson</b>
<b>Endora Feick</b>	<b>Nancy Ledbetter</b>	
<b>Patty Feller</b>	<b>April Richey</b>	

## RODP Mentors – Contracted Budgets with NSCC



## **NSCC Faculty & Program Mentors**

### **Contract Year: July 1 – June 30**

<b>FY 10-11</b>	<b>FY 09-10</b>	<b>FY 08-09</b>	<b>FY 07-08</b>	<b>FY 06-07</b>	<b>FY 05-06</b>
<b>Patty Feller</b>	<b>Jeanne Altstatt</b>	<b>Jim Formosa</b>	<b>Jim Formosa</b>	<b>Jim Formosa</b>	<b>Jim Formosa</b>
<b>Lance Woodward</b>	<b>Nancy Ledbetter</b>	<b>Lance Woodward</b>	<b>Kathy Emery</b>	<b>Kathy Emery</b>	<b>Mira Fleischman</b>
	<b>Lance Woodward</b>				